

Cascade offers a number of fork mounted jib cranes that quickly convert a lift truck into a mobile crane to easily move non-palletised product. A variety of Jib Crane models for practically any application to increase lift truck versatility. Models include Multi-Angled, Flat, Slip-On, or Carriage-Mounted, allowing for effective slinging of loads beneath a hook.

FEATURES & BENEFITS

- Multiple load positions via a telescoping boom.
- Multi-angle option allows extra height and load capacity and is easy to set using the 4-stage locking pin.
- Designed in accordance with AS2359.
- Zinc-plated finish.
- Capacity rated hooks and swivel included.
- Supplied with rating plate and user manual.
- Easy locking pins or chains to secure attachment to the lift truck.
- Wide variety of models options available.



Note: All lift truck attachments affect the safe working load of a lift truck. End users should consult their lift truck supplier to ensure the lift truck is rated for use with these attachments. In the case of a slung load when lifting a jib attachment, the net lifting capacity should be 0.8 times the rating of the lift truck to allow for the swinging load. Please consult your local lift truck.

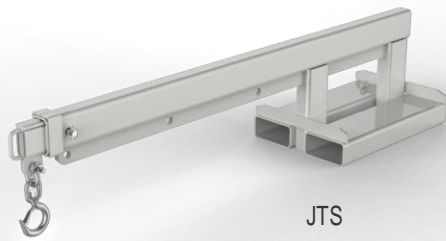
Catalogue Order No.	Capacity kg	JIB Height (mm)	JIB Length (mm)	Fork Pocket Size (mm)	Fork Pocket Centres (mm)	Overall Length Retracted (mm)	Maximum Reach Ext (mm)	Weight (mm)	Horizontal Centre of Gravity (mm)	Vertical Centre of Gravity (mm)	List Price Australia
20A-JSH-B01 Flat Jib	2000	NA	1040	140x65	250	500	1000	37	570	-30	POA
20A-JST-B01 Flat Jib with Tow Ball	2000* (note)	N/A	1415	140x65	250	575	1160	45	655	-30	POA
65H-CJ-10R Long Narrow		N/A	1530	185x75	350	N/A	1500	120	580	5	POA
65H-CJ-11R Long Narrow		N/A	2030	185x75	350	N/A	2000	139	750	5	POA
65H-CJ-12R Long Narrow		N/A	2530	185x75	350	N/A	2500	158	940	5	POA
65H-CJ-13R Long Narrow		N/A	3030	185x75	350	N/A	3000	177	1140	5	POA
65H-CJ-14R Long Narrow		N/A	3530	185x75	350	N/A	3500	196	1360	5	POA
65H-CJ-15R Long Narrow		N/A	4030	185x75	350	N/A	4000	215	1580	5	POA
75A-JTS-B02 Low Profile Extending Short	7500	500	N/A	180x80	875	1390	2005	320	740	100	POA
75A-JTS-B01 Low Profile Extending Long	7500	500	N/A	180x80	875	2190	3565	450	1200	100	POA
95A-JTS-B02	9500	600	N/A	230x110	875	1390	2005	400	740	100	POA
95A-JTS-B01	9500	600	N/A	230x110	875	2190	3565	515	1200	100	POA

* 500kg towing cap

Capacity Chart (kg) @ Load Centre LC(mm)

Hook Position	1	2	3	4	5	6	7	8
20A-JSH-B01 Flat Jib	2000@500	2000@1000						
20A-JST-B01 Flat Jib with Tow Ball	2000@575	2000@1160						
65H-CJ-10R Long Narrow	3000@800	3000@1000	2800@1500					
65H-CJ-11R Long Narrow	3000@800	3000@1000	2800@1500	1700@2000				
65H-CJ-12R Long Narrow	3000@800	3000@1000	2800@1500	1700@2000	1200@2500			
65H-CJ-13R Long Narrow	3000@800	3000@1000	2800@1500	1700@2000	1200@2500	900@3000		
65H-CJ-14R Long Narrow	3000@800	3000@1000	2800@1500	1700@2000	1200@2500	900@3000	700@3500	
65H-CJ-15R Long Narrow	3000@800	3000@1000	2800@1500	1700@2000	1200@2500	900@3000	700@3500	600@4000
75A-JTS-B02 Low Profile Extending Short	7500@930	3600@1245	2700@1625	2250@2005				
75A-JTS-B01 Low Profile Extending Long	7500@920	6410@1380	5700@1805	4950@2045	3750@2425	1950@2805	1140@3185	720@3565
95A-JTS-B02	9500@930	4800@1245	3600@1625	3000@2005				
95A-JTS-B01	9500@920	8550@1380	7600@1805	6600@2045	5000@2425	2600@2805	1520@3185	960@3565

* NOTE: Towing Capacity Limited to 500KG



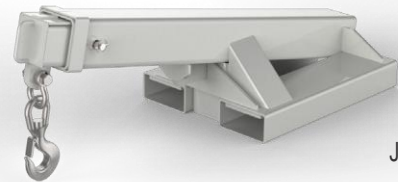
JTS



JTT



JST



JTF

Catalogue Order No.	Capacity kg	"A" JIB Height (mm)	Fork Pocket Size (mm)	Fork Pocket Centres (mm)	Overall Length Retracted (mm)	Maximum Reach Ext (mm)	Weight (mm)	Horizontal Centre of Gravity (mm)	Vertical Centre of Gravity (mm)	List Price Australia
25A-JTS-B01 Non Tilt Long	1	510	185x65	300	2140	3650	180	768	177	POA
25A-JTS-B02 Non Tilt Short	2	475	185x65	275	1300	1960	100	630	135	POA
45A-JTS-B01 Non Tilt Long	3	541	185x65	300	2140	3650	245	822	193	POA
45A-JTS-B03 Non Tilt Short low	4	240	185x65	290	1255	1925	95	735	120	POA
45A-JTS-B02 Non Tilt Long low	5	240	185x65	290	2140	3495	152	810	15	POA
50A-JTS-B01 Non Tilt Long	6	500	185x75	275	2100	3520	170	1210	200	POA
25A-JTT-B01 Tilting Long	7	605	185x65	346	2222	3580	226	705	225	POA
25A-JTT-B02 Tilting Short	8	556	165x65	337	1350	2020	130	650	300	POA
45A-JTT-B01 Tilting Long	9	646	185 X 65	322	2097	3530	190	1080	345	POA
50A-JTT-B01 Tilting Long	10	655	185x75	370	2160	3590	240	985	275	POA
35A-JTF-B01 Fixed Tilt	11	550	185x65	300	1390	2365	115	580	110	POA
47A-JTF-B01 Fixed Tilt	12	600	185x65	350	1390	2365	140	600	120	POA

Capacity Chart (kg) @ Load Centre LC(mm)

Hook Position	1	2	3	4	5	6	7	8	
25A-JTS-B01 Non Tilt Long	1	2500@950	2300@1410	1900@1870	1650@2035	1250@2405	650@2780	450@3150	250@3520
25A-JTS-B02 Non Tilt Short	2	2500@790	1200@1200	900@1580	750@1960				
45A-JTS-B01 Non Tilt Long	3	4500@1060	4150@1520	3300@2040	3300@2035	2500@2410	1300@2780	760@3150	480@3520
45A-JTS-B03 Non Tilt Short low	4	4500@670	2900@1165	1300@1545	750@1925				
45A-JTS-B02 Non Tilt Long low	5	4500@870			1650@2010	1250@2380	650@2755	450@3125	200@3495
50A-JTS-B01 Non Tilt Long	6	4750@935	4275@1395	3800@1855	3300@2000	2500@2380	1300@2760	760@3140	480@3520
25A-JTT-B01 Tilting Long	7	2500@1005	2300@1465	1900@1925	1650@2090	1150@2460	660@2830	400@3200	250@3580
25A-JTT-B02 Tilting Short	8	2500@825	1800@1125	1200@1260	900@1640	750@2020			
45A-JTT-B01 Tilting Long	9	4500@770	1100@2010	630@2390	470@2770	300@3150	150@3530		
50A-JTT-B01 Tilting Long	10	4750@1000	4275@1460	3800@1920	3300@2070	2500@2450	1300@2830	760@3210	480@3590
35A-JTF-B01 Fixed Tilt	11	3500@800	850@1390	500@1880	350@2365				
47A-JTF-B01 Fixed Tilt	12	4700@790	1200@1390	700@1880	500@2365				