

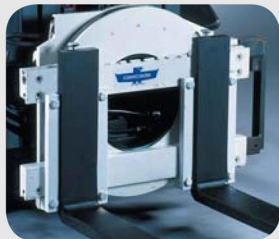
360° Rotation

Catalog Order No.	Capacity @ 24" 600mm Load Center		Fork Length A	Maximum OTO Fork Spread B	Mtg. Class	Mtg. Angle	Upper Hook Width OTO	Weight		Effective Thickness ET	Horizontal Ctr. of Gravity HCG	Vertical Ctr. of Gravity VCG	Overall Width C
	lbs	kg						lbs	kg				
65G-RRB-10B	①	①	w/o Forks	42"	III	0°	32"	723	328	7.9"	4.8"	12.0"	44"
65G-RRB-20B	①	①	w/o Forks	48"	III	0°	32"	747	339	7.9"	4.9"	12.0"	50"
65G-RRB-13B	6,500	3,000	42"	42"	III	0°	32"	1,019	462	9.7"	8.7"	9.7"	44"
65G-RRB-23B	6,500	3,000	42"	48"	III	0°	32"	1,043	473	9.7"	8.6"	9.7"	50"
65G-RRB-14B	6,500	3,000	48"	42"	III	0°	32"	1,049	476	9.7"	9.7"	9.3"	44"
65G-RRB-24B	6,500	3,000	48"	48"	III	0°	32"	1,073	487	9.7"	9.6"	9.3"	50"
65G-RRB-15B	6,500	3,000	54"	42"	III	0°	32"	1,077	488	9.7"	10.8"	9.0"	44"
65G-RRB-25B	6,500	3,000	54"	48"	III	0°	32"	1,101	499	9.7"	10.7"	9.0"	50"
65G-RRB-16B	6,500	3,000	60"	42"	III	0°	32"	1,105	501	9.7"	11.9"	8.7"	44"
65G-RRB-26B	6,500	3,000	60"	48"	III	0°	32"	1,129	512	9.7"	11.8"	8.7"	50"

① Rotator capacity limited by fork size, see Capacity Chart on opposite page for capacities with various fork sizes.

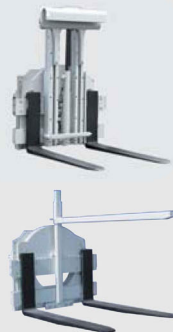
► Optional motors providing increased torque are available. Reduced speed will result.

Rotator Options



Fork Restraints

Used to limit fork movement during rotation.

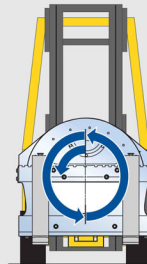


Hydraulic Bin Retainer

Typically used when bin does not have fork pockets on top of bin to hold bin in place while rotating.

Mechanical Bin Retainer

Class II, designed to retain lightweight bins.



Electronic Rotational Control (Factory Installed)

Provides 90° and 180° stops during 360° rotation, which automatically stops load at each quadrant of rotation.

Foundry Options

In foundry applications that will experience molten metal splash and high heat, the basic foundry package is required. Consult Cascade for pricing information on the following options:

Basic Foundry Rotator includes:

- Solid face plate (without visibility cutout) hold on forks or custom front end when specified.
- High temperature grease.
- High temperature seals in hydraulic motor.

Optional Modifications to Foundry Package:

- Spacers for forks or other devices when bolted directly to the faceplate to prevent excessive thermal transfer into the ring gear.
- Optional splash guard helps protect motor and bearing assembly from molten metal splashes.
- Larger motors for high torque, low speed operation.

