

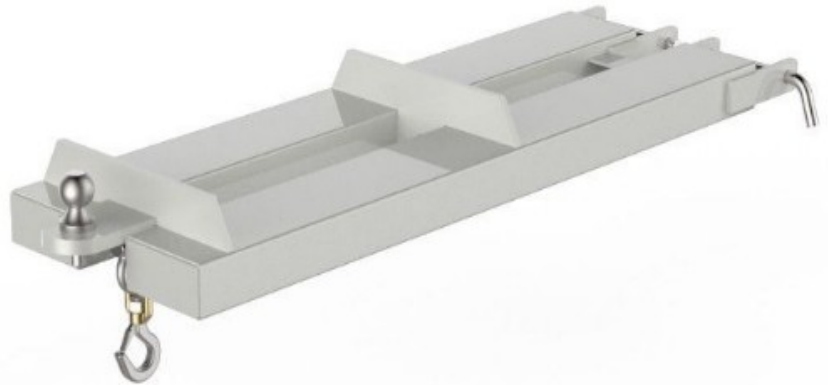
APPLICATIONS

Cascade offers a number of fork mounted jib cranes that quickly convert a lift truck into a mobile crane to easily move non-palletised product. A variety of Jib Crane models for practically any application to increase lift truck versatility. Models include Multi-Angled, Flat, Slip-On, or Carriage- Mounted, allowing for effective slinging of loads beneath a hook.

The standard finish on this attachment is zinc.

SPECIFICATIONS

SWL	2000kg
Towing Capacity	500kg
H C of G	656mm
V C of G	23.5mm
Weight	50kg
Fork Pockets	120x40mm
Pocket Centres	108mm (ITI)
Drawing Ref	SK-27947



DIMENSIONS

LENGTH	1365mm
HEIGHT	154mm
WIDTH	420mm

Note: All lift truck attachments affect the safe working load of a lift truck. End users should consult their lift truck supplier to ensure the lift truck is rated for use with these attachments. In the case of a slung load when lifting a jib attachment, the net lifting capacity should be 0.8 times the rating of the lift truck to allow for the swinging load. Please consult your local lift truck dealer.

FEATURES & BENEFITS

- Pocket size to suit most fork section sizes.
- Fork Arm Retaining Toggles
- Safety Swivel Hook supplied standard
- Two Lifting Points

SAFE WORKING LOAD (SWL) PER POSITION			
POSITION	1	2	TOWING CAPACITY
SWL (kg)	2000	2000	500
EXTENSION (mm)	575	1160	1265

