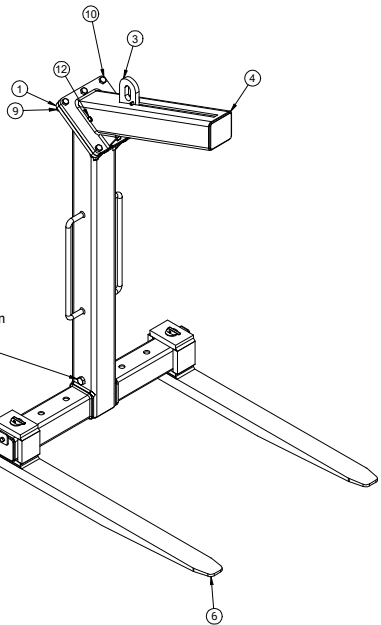
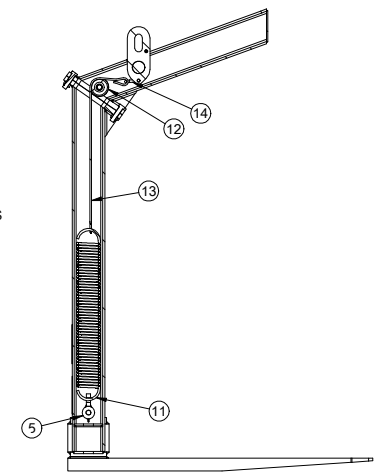
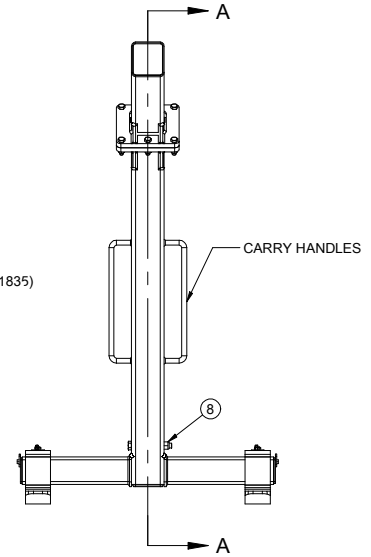
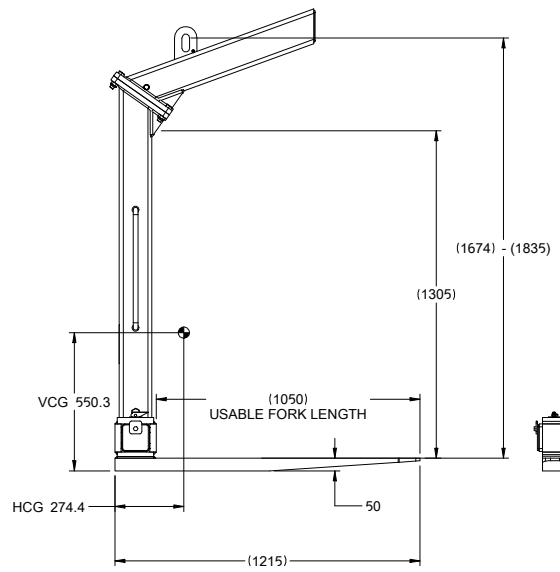
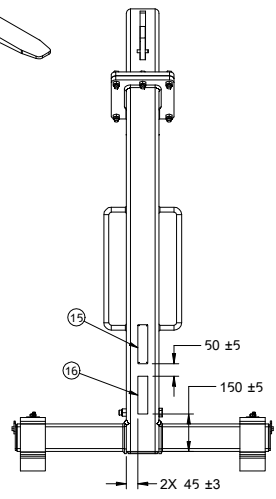
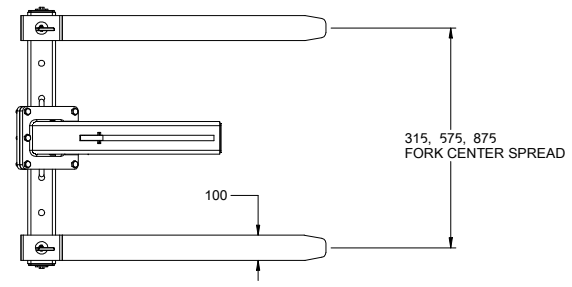


TORQUE TO 165 Nm
PER CPS 1



TORQUE TO 320 Nm
PER CPS 1

TORQUE TO 38 Nm
PER CPS 1



SECTION A-A

Q	Q-O	PN	----
1	1	1878275	VERTICAL SUPPORT WELDMENT
2	2	1878274	OUTER STOP ASSEMBLY
3	1	6946667	ROLLING HANGER ASSEMBLY
4	1	1878280	UPPER ARM WELDMENT
5	1	1878285	SPRING BLOCK WELDMENT
6	2	1879823	FORK WELDMENT
7	1	6405095	SCR-HH M20X2.5 L160-52
8	1	C-783800	NUT-HXLK-N M20X2.5, 30-14-20
9	6	C-678990	NUT-HXLK-N M16X2, 24-10.5-16
10	6	C-796631	SCR-HH M16X2 L65-38
11	1	1878289	SPRING
12	1	6946676	ROLLER BLOCK ASSY
13	1	1879980	WIRE
14	1	1879932	SHACKLE ASSEMBLY
15	1	1854228	NAMEPLATE
16	1	1854268	DECAL, STATUTORY WARNING

SPECIFICATIONS:

MODEL NUMBER: 20A-PHC-F-0100
 CAPACITY AT LOAD CENTRE: 2000 kg X 600 MM
 EXTERNAL DIMENSIONS: 1215 X 1016 X 1930 MM
 WEIGHT: 216. kg
 FORK SIZE: 100 X 50 MM
 USABLE FORK LENGTH: 1050 MM
 HORZ. COG: REFER TO DRAWING
 VERT. COG: REFER TO DRAWING

NOTES:

1. ALL COMPONENTS SHALL ASSEMBLE EASILY WITHOUT FORCING.
2. TORQUE ALL BOLTS TO MANUFACTURER RECOMMENDED TORQUES.

HS Part No: 20A-PHC-A01

A-PIC REV		LISTED		MSCHINDL		BHUDSPET		2021-02-04		216.kg		1 SK-27002		R- 2									
SEE CASCADE ENGINEERING STANDARDS FOR DRAFTING CONVENTIONS. UNLESS OTHERWISE SPECIFIED, ALL DIMENSIONS ARE IN MILLIMETERS. ALL POSITION TOLERANCES APPLY AT Ⓢ. ENVELOPE REQUIREMENT, Ⓢ, APPLIES.																							
PALLET HOOK LAYOUT SELF LEVELING 20A-PHC-F-0100																							