

APPLICATIONS

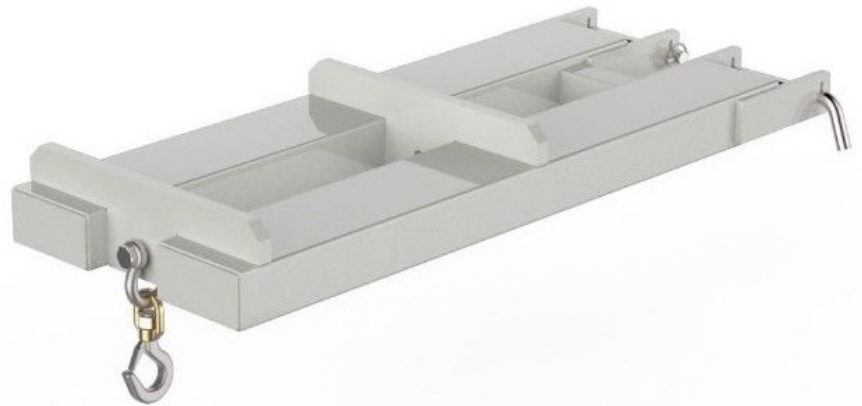
Cascade offers a number of fork mounted jib cranes that quickly convert a lift truck into a mobile crane to easily move non-palletised product. A variety of Jib Crane models for practically any application to increase lift truck versatility. Models include Multi-Angled, Flat, Slip-On, or Carriage- Mounted, allowing for effective slinging of loads beneath a hook. The standard finish on this attachment is zinc.

SPECIFICATIONS

SWL	2000kg
H C of G	491mm
V C of G	24.4mm
Weight	41kg
Fork Pockets	140x50mm
Drawing Ref	SK-56068

DIMENSIONS

LENGTH	1105mm
HEIGHT	140mm
WIDTH	425mm



FEATURES & BENEFITS

- Pocket size to suit most fork section sizes.
- Fork Arm Retaining Toggles
- 1x Safety Swivel Hook supplied standard
- Two Lifting Positions

Note: All lift truck attachments affect the safe working load of a lift truck. End users should consult their lift truck supplier to ensure the lift truck is rated for use with these attachments. In the case of a slung load when lifting a jib attachment, the net lifting capacity should be 0.8 times the rating of the lift truck to allow for the swinging load. Please consult your local lift truck dealer.

SAFE WORKING LOAD (SWL) PER POSITION		
POSITION	1	2
SWL (kg)	2000	2000
EXTENSION (mm)	500	1000

