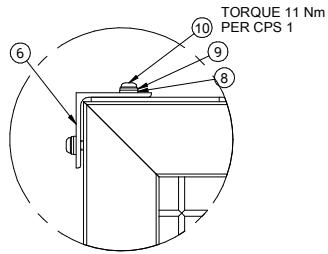
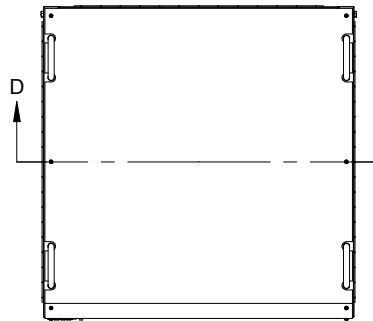


DETAIL B

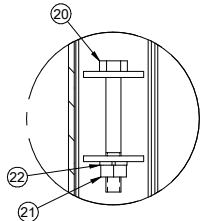


DETAIL A

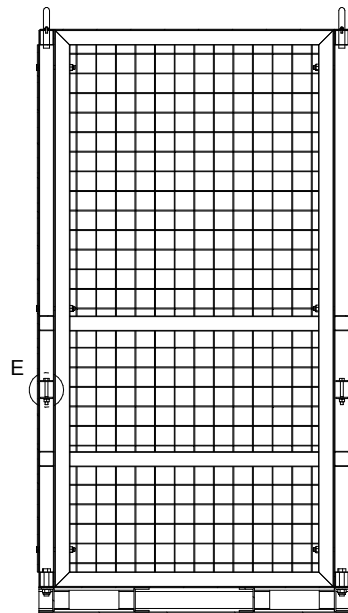


ASSEMBLY NOTES:
 1. CONSULT CASCADE AUSTRALIA FOR OPERATION, MAINTENANCE AND OTHER SAFE USE INSTRUCTIONS.
STRUCTURAL NOTES:
 1. COMPLIANT WITH AS 3990-1993 AND AS 4991-2004.
 2. DISTRIBUTE LOADS EVENLY OVER BASE FORKS.
 3. WELDED MESH NOT CERTIFIED FOR STRUCTURAL LOADING.
 4. CAGE MUST BE LIFTED WITH BASE FORKS SECURED AND LOCKED.
 5. MAXIMUM SLING ANGLE 60°.

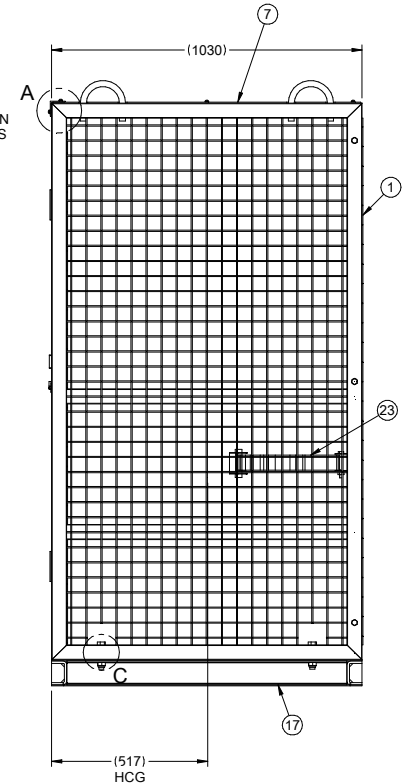
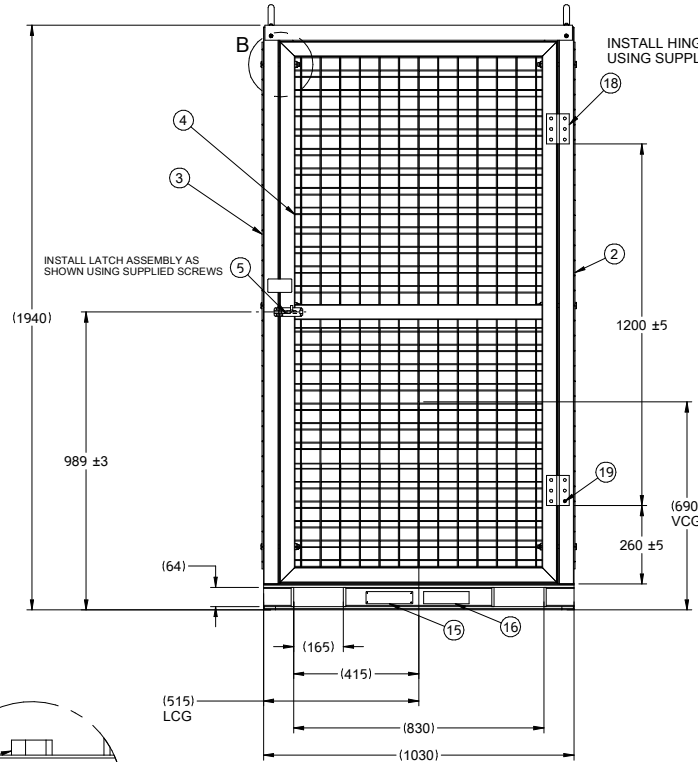
SPECIFICATIONS:
 MODEL NUMBER: 08A-GCC-F-0100
 CAPACITY AT LOAD CENTER: 750 KG
 WEIGHT: 233 kg
 HCG: 517 mm
 VCG: 690 mm
 FORK POCKET SIZE: 165 X 64 mm



DETAIL E

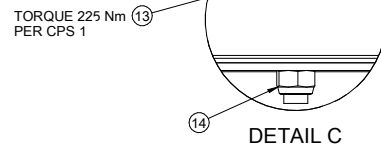


SECTION D-D



o	o-o	PN	*****
1	1	6946509	REAR PANEL
2	1	6946518	RH PANEL
3	1	6946519	LH PANEL
4	1	6946527	FRONT PANEL
5	1	6946529	LATCH ASSEMBLY
6	1	6946530	TOP EA
7	1	6946531	TOP PLATE
8	8	C-202346	WSHR-FLAT M6 6.4-12-1.6
9	7	C-206323	WSHR-LCK M6 6.1-11.8X1.6
10	8	C-220436	SCR-SHB M6X1 L16
11	6	6405047	SCR-HH M12X1.75 L120-30
12	6	C-205979	NUT-HXLK-N M12X1.75, 19-8-12
13	4	6405070	CAPSCREW HEX HEAD
14	4	C-678990	NUT-HXLK-N M16X2, 24-10.5-16
15	1	1854228	NAMEPLATE
16	1	1854268	DECAL, STATUTORY WARNING
17	1	1888234	FORK POCKET WELDMENT
18	2	6946861	HINGE
19	18	1888374	TEK SCREW
20	2	6405031	SCR-HH M10X1.5 L80-26
21	2	C-763023	NUT-HX M10X1.5 17-8
22	2	C-681238	WSHR-LKSP M10 10.2-18.1-2.2
23	1	6947121	STRAP ASSEMBLY

(A)
(B)
(B)
(B)
(B)
(B)
(B)



DETAIL C

A-WAS 6946504		LISTED		D/CHEW		D/CHEW		2021-05-05		233 kg		GAS CYL STOR CAGE-750KG		1 SK-61554		R- 1	
<p>SEE CASCADE ENGINEERING STANDARDS FOR DRAFTING CONVENTIONS. UNLESS OTHERWISE SPECIFIED, ALL DIMENSIONS ARE IN MILLIMETERS. ALL POSITION TOLERANCES APPLY AT (S) - ENVELOPE REQUIREMENT, (D) - APPLIES.</p>																	