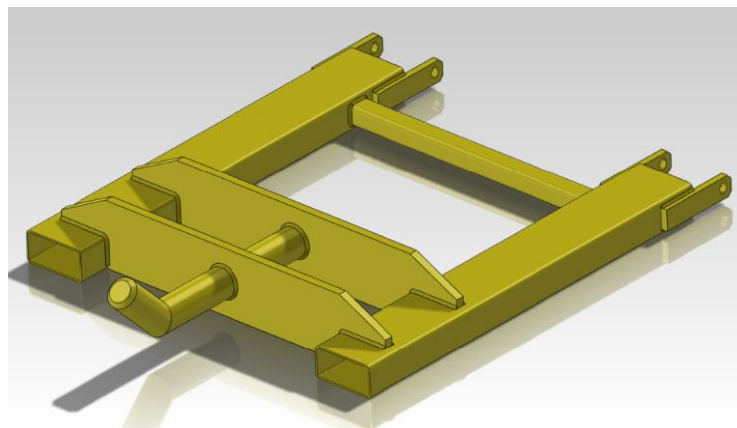
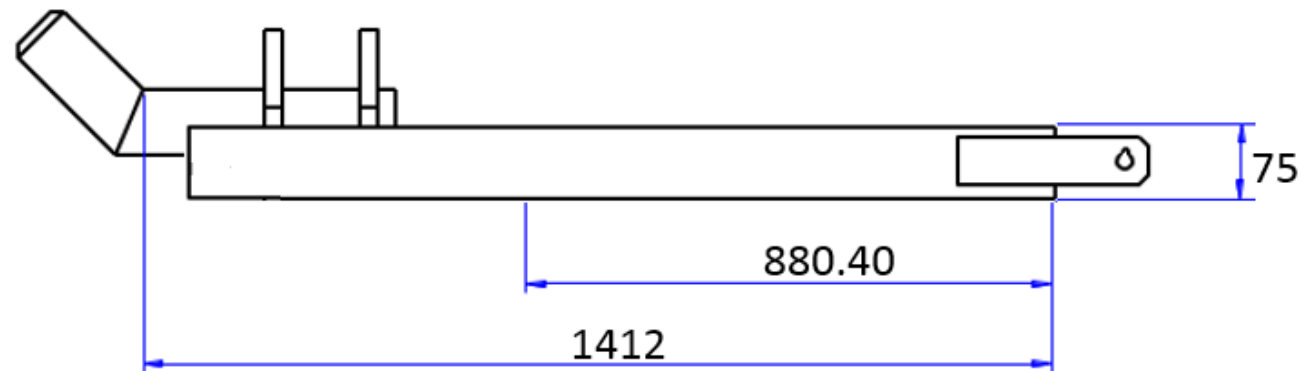
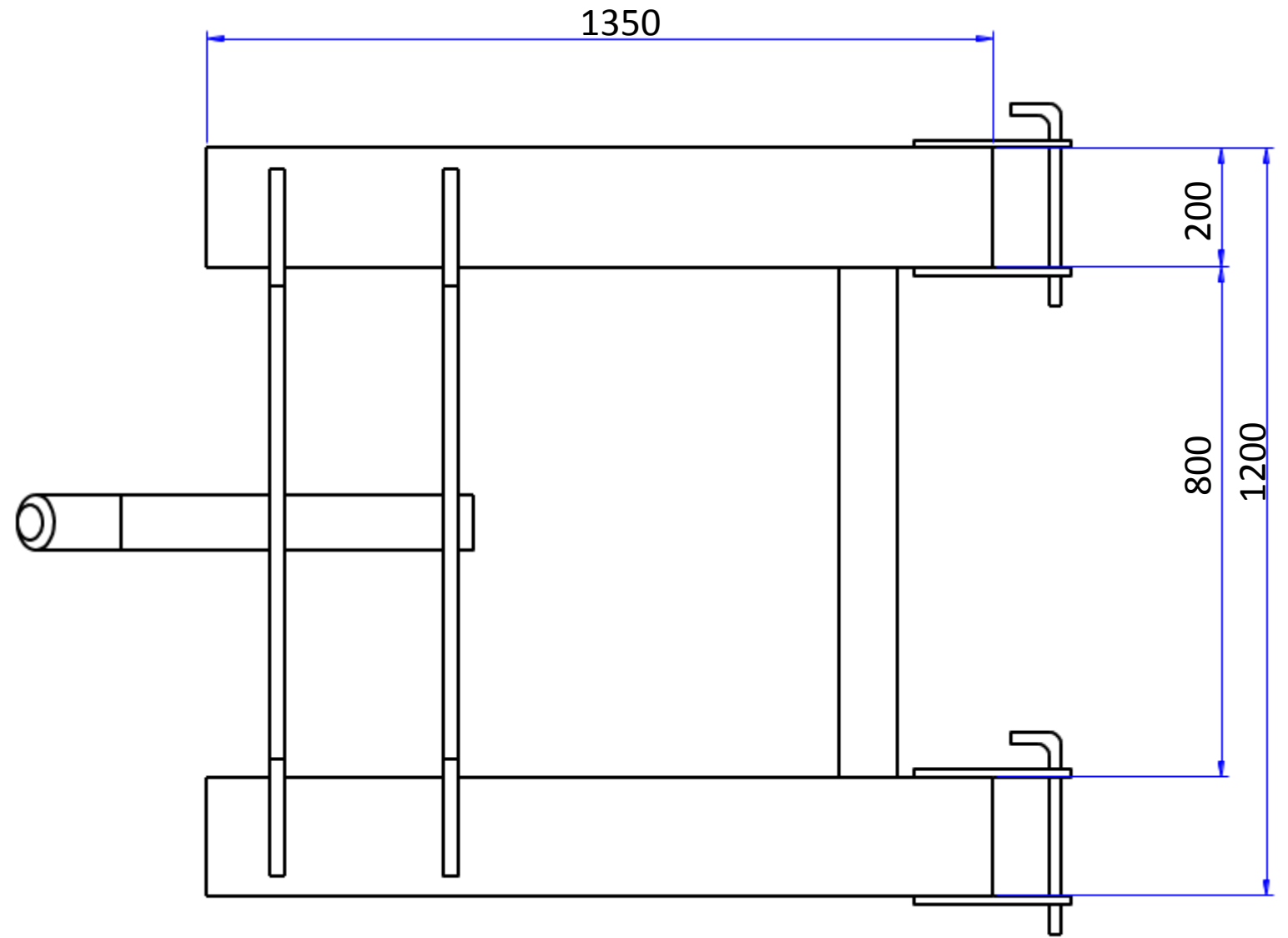



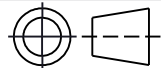
SPECIFICATIONS

WLL:	1450kgs
Load Centre:	1412mm
H C of G	880mm
V C of G	95mm
Weight:	145kg

NOTES

- To suit fork max 150x65mm
- As per AS2359.1
- Safety yellow paint
- Secured to truck via locking pin plates
- Grind sharp edges
- Design HSRD 2120



MM	 HANDLING SYSTEMS AUSTRALIA	HS RESEARCH & DEVELOPMENT PTY LTD 2/3 ATLAS COURT, WELSHPOOL WA 6106 Ph: +61 (08) 9458 7933 F: +61 (08) 9458 1351	
D.N.S	HSBBJ-RH Bulk Bag Jib – Rhino Horn		
CHECKED	DRAWING STATUS FOR QUOTING PURPOSES	HSRD 2120	
	SCALE: DO NOT SCALE	DIMENSIONS IN MILLIMETRES	DO NOT SCALE
			HS