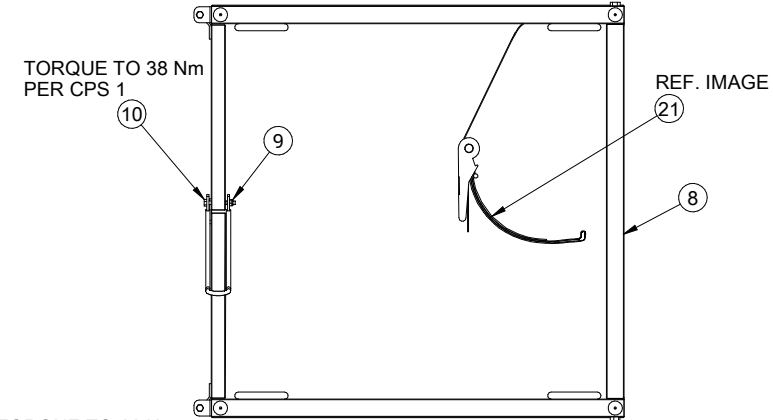
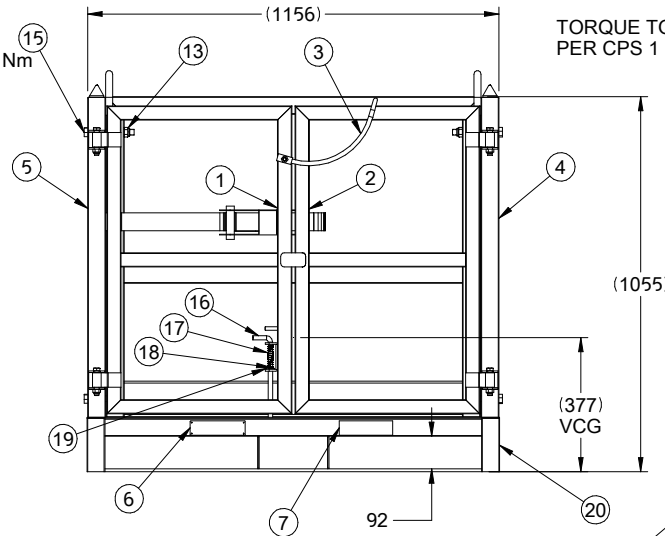


- ASSEMBLY NOTES:**
1. CONSULT CASCADE AUSTRALIA FOR OPERATION, MAINTENANCE AND OTHER SAFE USE INSTRUCTIONS.
- STRUCTURAL NOTES:**
2. COMPLIANT WITH AS 3990-1993 AND AS 4991-2004.
 3. DISTRIBUTE LOADS EVENLY OVER BASE FORKS.
 4. MAX. SLING ANGLE 60°.
 5. GATE MUST BE CLOSED PRIOR TO LIFTING WITH CRANE.

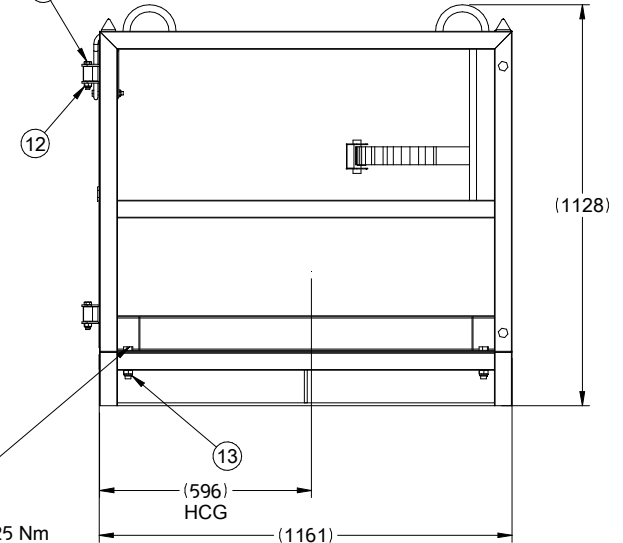
SPECIFICATIONS:
 MODEL NUMBER: 10A-GCC-F-0100
 CAPACITY AT LOAD CENTER: 1000 KG
 WEIGHT: 172 kg
 HCG: 596 mm
 VCG: 377 mm



TORQUE TO 165 Nm PER CPS 1



TORQUE TO 66 Nm PER CPS 1



TORQUE TO 525 Nm PER CPS 1

o	o-o	PN	-----
1	1	6946982	LH GATE
2	1	6946977	RH GATE
3	1	6949910	LATCH WELDMENT
4	1	6946889	SIDE PANEL
5	1	6946890	SIDE PANEL
6	1	1854228	NAMEPLATE
7	1	1854268	DECAL, STATUTORY WARNING
8	1	6946895	REAR PANEL
9	1	C-786882	NUT-HXLK-N M10X1.5, 17-6.5-10
10	1	6405031	SCR-HH M10X1.5 L80-26
11	4	6405045	SCR-HH M12X1.75 L70-30
12	4	C-205979	NUT-HXLK-N M12X1.75, 19-8-12
13	8	C-678990	NUT-HXLK-N M16X2, 24-10.5-16
14	4	6405070	CAPSCREW HEX HEAD
15	4	6020527	SCR-HH M16X2 L130-38
16	1	6946983	LATCH PIN
17	1	6946984	SPRING
18	1	6802685	SPLIT PIN
19	1	C-202348	WSHR-FLAT M12 13-24X2.5
20	1	6946879	FLOOR WELDMENT
21	1	6947121	STRAP ASSEMBLY

(B)

A-NOTES AMENDMENT	LISTED	D-CHEW
B-ADD STRAP RATCHET		MSCHINDL
		2021-06-14
		172.kg

SEE CASCADE ENGINEERING STANDARDS FOR DRAFTING CONVENTIONS. UNLESS OTHERWISE SPECIFIED ALL DIMENSIONS ARE IN MILLIMETERS. ALL POSITION TOLERANCES APPLY AT Ⓢ. ENVELOPE REQUIREMENT, Ⓢ, APPLIES.

METRIC

THIS DRAWING IS THE PROPERTY OF CASCADE AND CONTAINS CONFIDENTIAL INFORMATION. DO NOT REPRODUCE OR USE WITHOUT WRITTEN APPROVAL.

GAS CYLINDER STOR CAGE-1000 KG

1 SK-61556 R- 1

CASCADE CORPORATION ©