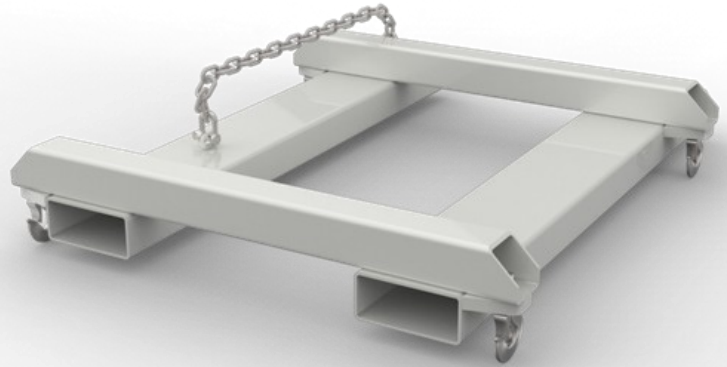


APPLICATIONS

The JSB Slip-On Bulk Bag Jib attachment is designed with 4 lifting points to suit standard Bulk Bags. The Jib is fitted with four (4) safety swivel hooks to enable the safe lifting of cumbersome bulk bags. Jib secures to Carriage via chain. The standard finish on this attachment is zinc.

SPECIFICATIONS

SWL	2000kg
Load Centre	700mm
Weight	75kg
Fork Pockets	150x65mm
Pocket Centres	640mm
Hook Centres	900mm
Drawing Ref	SK-56071



DIMENSIONS

LENGTH	1200mm
HEIGHT	150mm
WIDTH	960mm

FEATURES & BENEFITS

- Pocket size to suit most fork section sizes.
- Open end pockets to suit longer forks
- Safety Hook supplied standard
- Safety Retaining chain

Note: All lift truck attachments affect the safe working load of a lift truck. End users should consult their lift truck supplier to ensure the lift truck is rated for use with these attachments. In the case of a slung load when lifting a jib attachment, the net lifting capacity should be 0.8 times the rating of the lift truck to allow for the swinging load. Please consult your local lift truck dealer.

