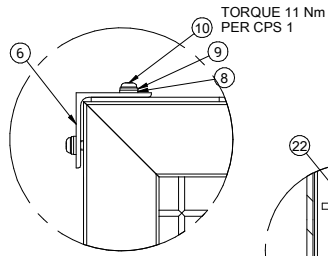
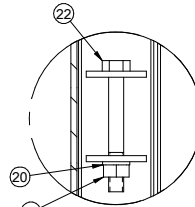


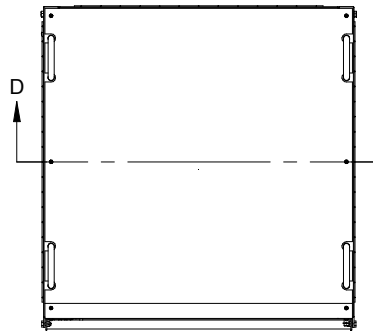
DETAIL B



DETAIL A

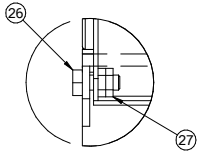


DETAIL E



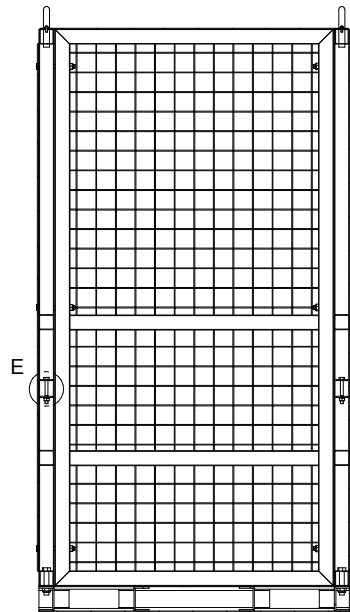
- ASSEMBLY NOTES:**
1. CONSULT CASCADE AUSTRALIA FOR OPERATION, MAINTENANCE AND OTHER SAFE USE INSTRUCTIONS.
- STRUCTURAL NOTES:**
1. COMPLIANT WITH AS 3990-1993 AND AS 4991-2004.
 2. DISTRIBUTE LOADS EVENLY OVER BASE FORKS.
 3. WELDED MESH NOT CERTIFIED FOR STRUCTURAL LOADING.
 4. CAGE MUST BE LIFTED WITH BASE FORKS SECURED AND LOCKED.
 5. MAXIMUM SLING ANGLE 60°.

SPECIFICATIONS:
 MODEL NUMBER: 08A-GCC-F-0125
 CAPACITY AT LOAD CENTER: 750 KG
 WEIGHT: 246 kg
 HCG: 490 mm
 VCG: 668 mm
 FORK POCKET SIZE: 165 X 64 mm

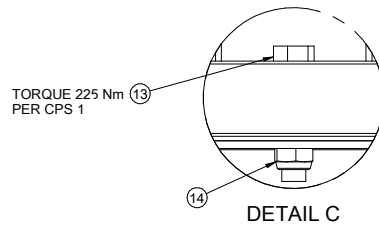
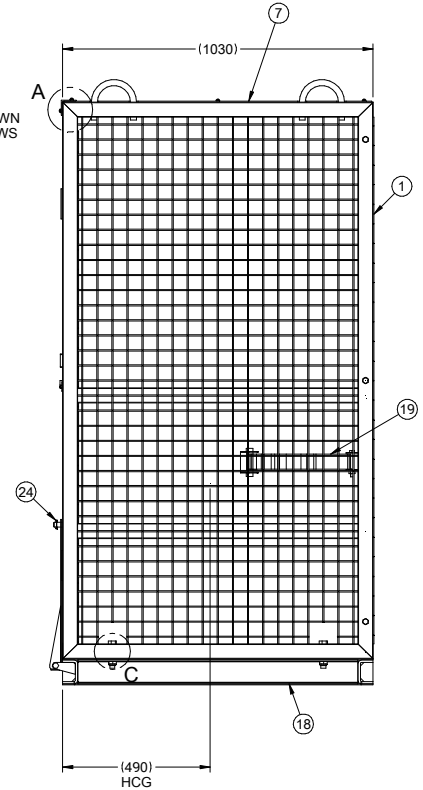
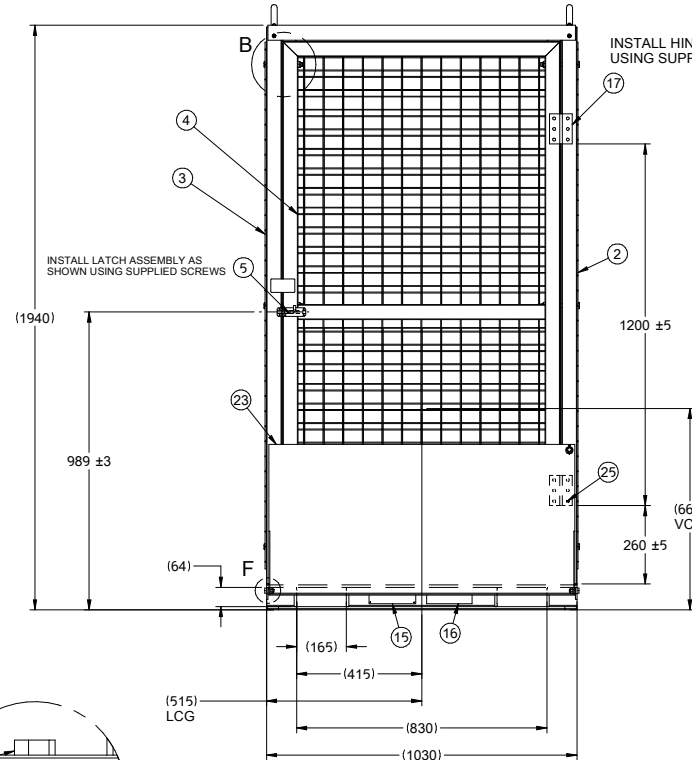


DETAIL F

o	o-o	PN	-----
1	1	6946509	REAR PANEL
2	1	1888375	RH PANEL
3	1	6946519	LH PANEL
4	1	6946527	FRONT PANEL
5	1	6946529	LATCH ASSEMBLY
6	1	6946530	TOP EA
7	1	6946531	TOP PLATE
8	8	C-202346	WSHR-FLAT M6 6.4-12-1.6
9	7	C-206323	WSHR-LCK M6 6.1-11.8X1.6
10	8	C-220436	SCR-SHB M6X1 L16
11	6	6405047	SCR-HH M12X1.75 L120-30
12	6	C-205979	NUT-HX LK-N M12X1.75, 19-8-12
13	4	6405070	CAPSCREW HEX HEAD
14	4	C-678990	NUT-HX LK-N M16X2, 24-10.5-16
15	1	1854228	NAMEPLATE
16	1	1854268	DECAL, STATUTORY WARNING
17	2	6946861	HINGE
18	1	1888229	FORK POCKET WELDMENT
19	1	6947121	STRAP ASSEMBLY
20	2	C-681238	WSHR-LKSP M10 10.2-18.1-2.2
21	2	C-763023	NUT-HX M10X1.5 17-8
22	2	6405031	SCR-HH M10X1.5 L80-26
23	1	6946867	RAMP WELDMENT
24	1	6946864	LYNCH PIN
25	18	1888374	TEK SCREW
26	2	C-684649	SCR-HH M10X1.5 L25
27	4	C-209152	NUT-HXJAM M10X1.5 17-5



SECTION D-D



DETAIL C

A-RELEASED		LISTED		D/CHEW			
						CASCADE CORPORATION THIS DRAWING IS THE PROPERTY OF CASCADE AND CONTAINS CONFIDENTIAL INFORMATION. DO NOT REPRODUCE OR USE WITHOUT WRITTEN APPROVAL.	
				2021-05-05 246 kg		GAS CYL STOR CAGE-RAMP 750KG	
						1 SK-56723	
						R- 0	

SEE CASCADE ENGINEERING STANDARDS FOR DRAFTING CONVENTIONS. UNLESS OTHERWISE SPECIFIED, ALL DIMENSIONS ARE IN MILLIMETERS. ALL POSITION TOLERANCES APPLY AT Ⓢ. ENVELOPE REQUIREMENT, Ⓢ, APPLIES.

METRIC
 CASCADE CORPORATION