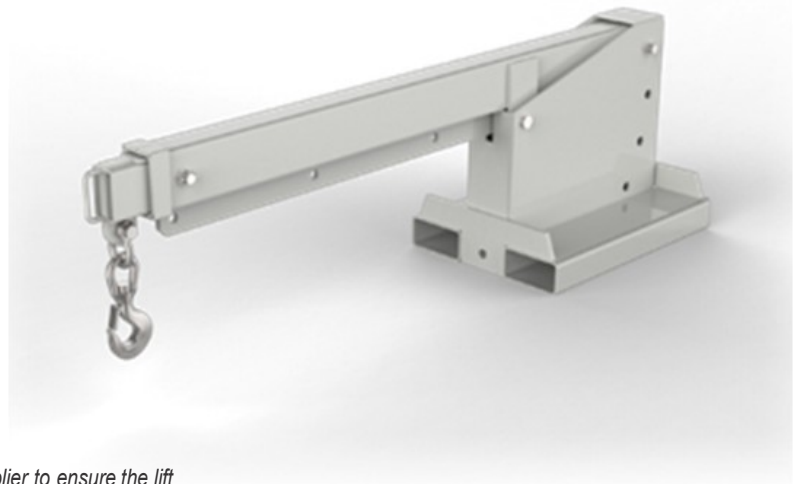


APPLICATIONS

Cascade offers a number of fork mounted jib cranes that quickly convert a lift truck into a mobile crane to easily move non-palletised product. A variety of Jib Crane models for practically any application to increase lift truck versatility. Models include Multi-Angled, Flat, Slip-On, or Carriage- Mounted, allowing for effective slinging of loads beneath a hook. Unit secured to the forklift by safety locking pins or chain. Supplied with rating plate and rated safety swivel hook. The standard finish on this attachment is zinc.

SPECIFICATIONS

SWL	4500kg
H C of G	772mm
V C of G	245mm
Weight	315kg
Fork Pockets	185x65mm
Pocket Centres	322mm
Jib Height	646mm
Overall Length:	2097mm closed
Drawing Ref	SK-27547



Note: All lift truck attachments affect the safe working load of a lift truck. End users should consult their lift truck supplier to ensure the lift truck is rated for use with these attachments. In the case of a slung load when lifting a jib attachment, the net lifting capacity should be 0.8 times the rating of the lift truck to allow for the swinging load. Please consult your local lift truck dealer

SAFE WORKING LOAD (SWL) PER POSITION								
POSITION	1	2	3	4	5	6	7	8
SWL (kg)	4500	4150	3700	3300	2500	1300	760	480
EXTENSION (mm)	1060	1505	1950	2105	2475	2845	3220	3590

