

APPLICATIONS

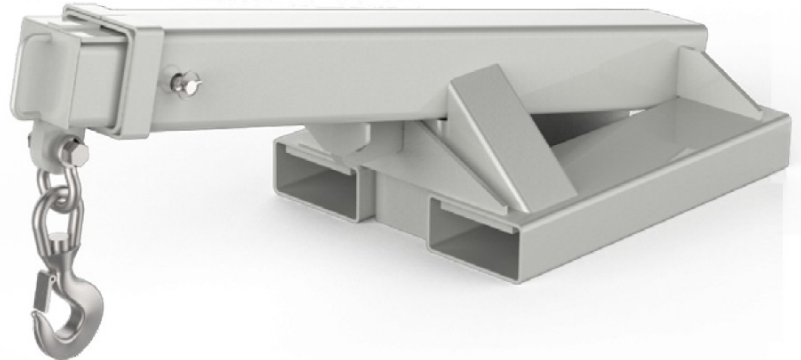
Cascade offers a number of fork mounted jib cranes that quickly convert a lift truck into a mobile crane to easily move non-palletised product. A variety of Jib Crane models for practically any application to increase lift truck versatility. Models include Multi-Angled, Flat, Slip-On, or Carriage- Mounted, allowing for effective slinging of loads beneath a hook. Unit secured to the forklift by safety locking pins or chain. Supplied with rating plate and rated safety swivel hook. The standard finish on this attachment is zinc.

SPECIFICATIONS

SWL	3500kg
Load Centre	800mm
H C of G	580mm
V C of G	110mm
Weight	115kg
Drawing Ref	SK-27944

DIMENSIONS

Fork Pockets	185x65mm
Pocket Centres	300mm
Maximum Reach	2365mm
Overall Length	1640mm closed
Overall Length	2665mm extended
Width	550mm



Note: All lift truck attachments affect the safe working load of a lift truck. End users should consult their lift truck supplier to ensure the lift truck is rated for use with these attachments. In the case of a slung load when lifting a jib attachment, the net lifting capacity should be 0.8 times the rating of the lift truck to allow for the swinging load. Please consult your local lift truck dealer.

SAFE WORKING LOAD (SWL) PER POSITION

POSITION	1	2	3	4
SWL (kg)	3500	850	500	350
Extension (mm)	800	1390	1880	2365

